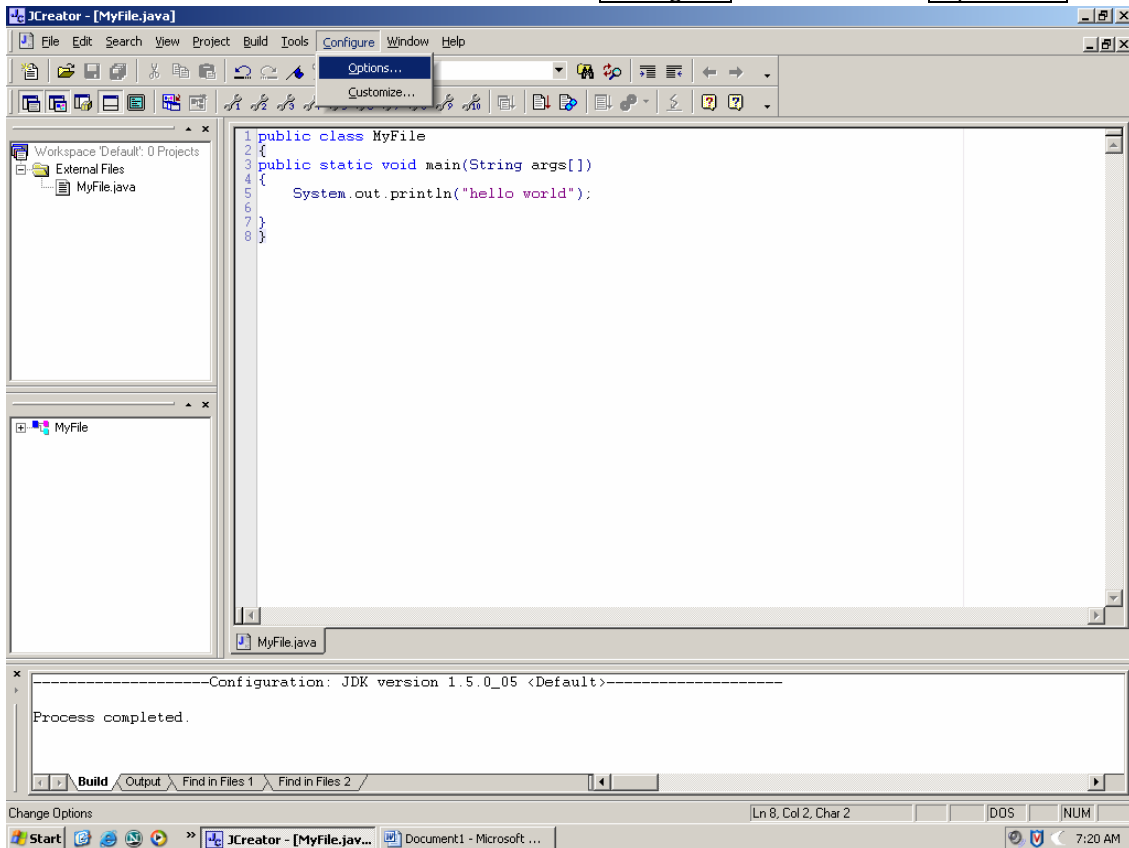
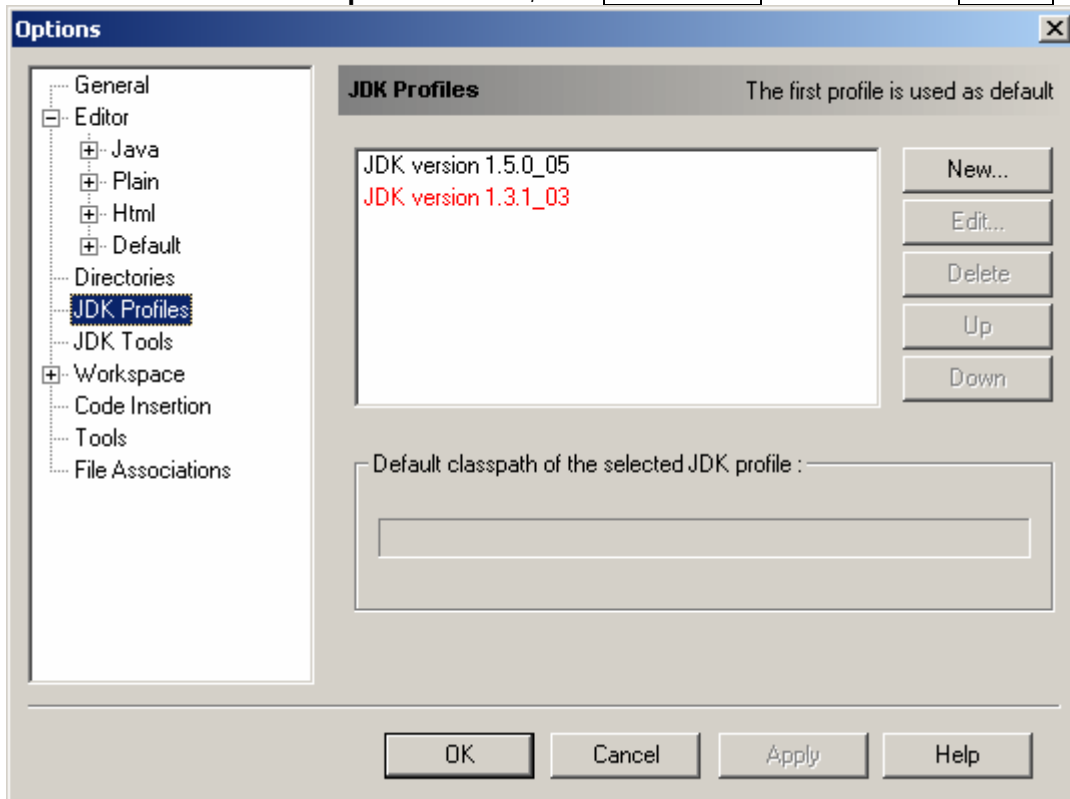


## Setting the Class Path in JCreator LE

**STEP 1** On the main JCreator menu, click **Configure** and then select **Options ...** .

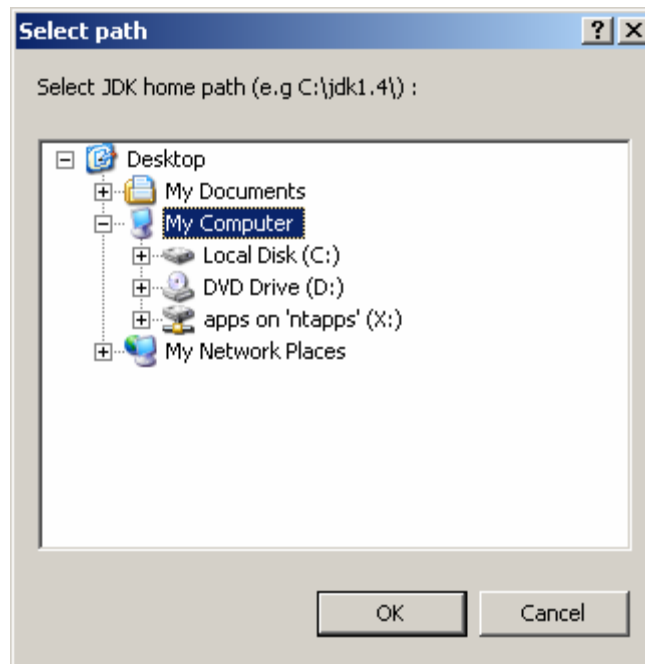


**STEP 2** Within the **Options** window, click **JDK Profiles** and then select **New...** .

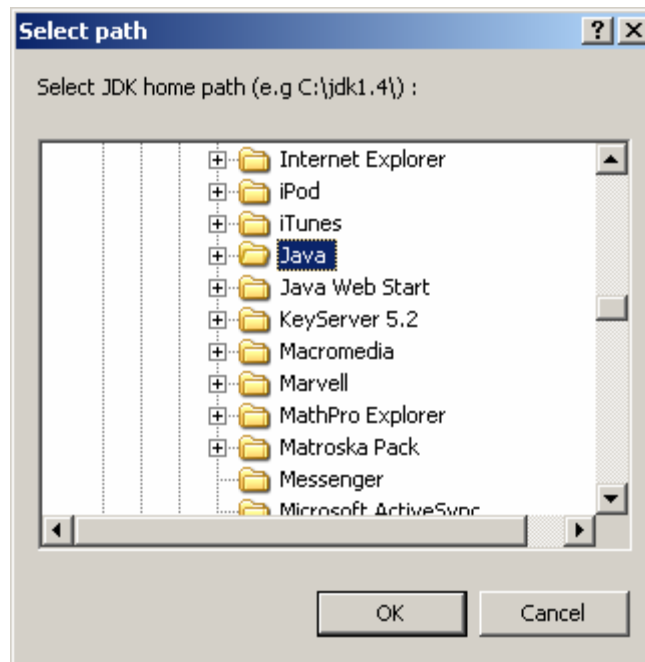


## Setting the Class Path in JCreator LE

**STEP 3** Double - click the C: drive, and then double - click the **Program Files** folder.

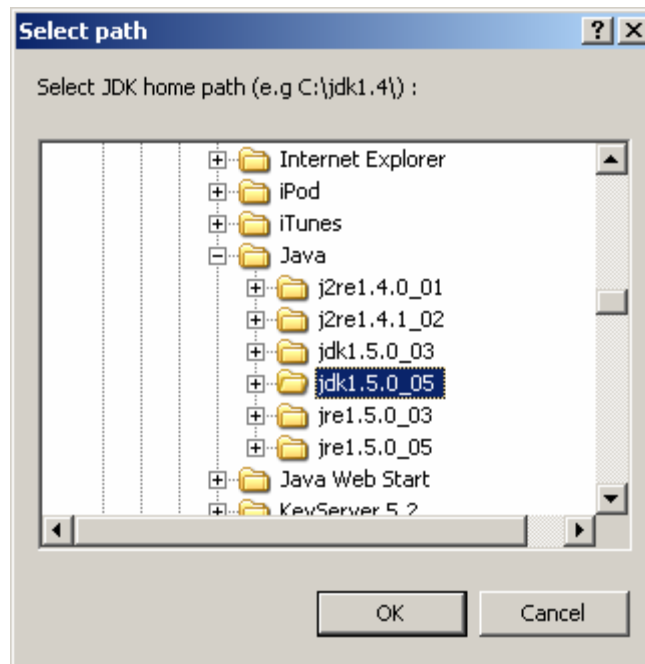


**STEP 4** Within the **Program Files** folder, double - click the **Java** folder.



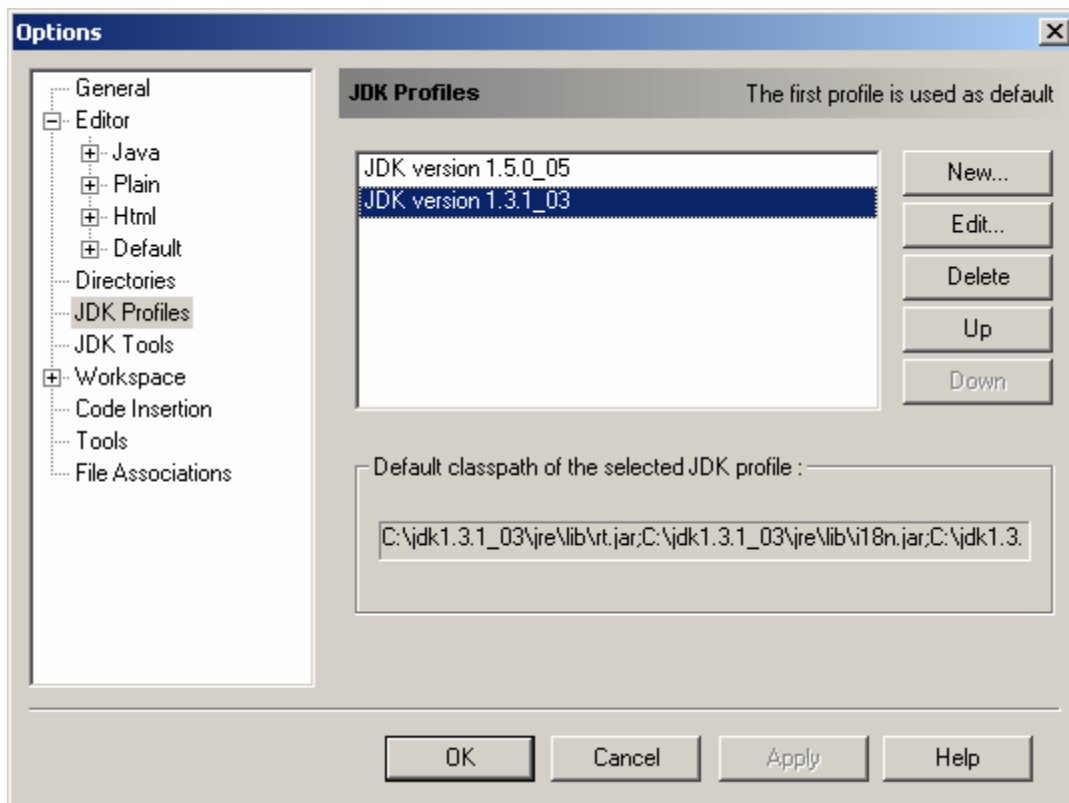
## Setting the Class Path in JCreator LE

**STEP 5** Within the **Java** folder, click to select the **jdk1.5.0\_05** folder and click **OK**.



**STEP 6** Click **OK** to close the resulting dialog box.

**STEP 7** Within the **Options** window, click the **JDK version 1.5.0\_05** profile and then click the Up button **Up** button.



**STEP 8** Click **OK** to close the dialog box.